

# JBoss Eclipse IDE 1.5 Installation Guide

A guide for installing JBoss Eclipse IDE 1.5.

1.5

---

## Table of Contents

Preface .....	iii
1. Foreword .....	iii
2. About the Authors .....	iii
3. About JBoss .....	iii
4. Acknowledgements .....	iii
1. Introduction to JBossIDE .....	1
2. Install & Upgrade .....	2
2.1. Eclipse 3.1.x .....	2
3. XDoclet Upgrade .....	4

---

# Preface

## 1. Foreword

JBoss-IDE started with an XDoclet plug-in for eclipse in the middle of 2002. Then Hans Dockter met Marc as he participated at a JBoss training in Mallorca and they talked about the possibility of developing a JBoss-IDE.

## 2. About the Authors

- Marshall Culpepper is the project lead of JBoss-IDE. Marshall is a full time employee of JBoss, Inc. And lives in Dallas, Texas.
- Laurent Etiemble, is an active contributor to the JBoss-IDE project. Laurent works as a consultant and lives in Paris, France.
- Hans Dockter, was the founder and lead architect of the Jboss-IDE project. Hans works as an independent consultant and lives in Berlin, Germany.

## 3. About JBoss

JBoss Project, headed by Marc Fleury, is composed of over 100 developers worldwide who are working to deliver a full range of J2EE tools, making JBoss the premier Enterprise Java application server for the Java 2 Enterprise Edition platform.

JBoss is an Open Source, standards-compliant, J2EE application server implemented in 100% Pure Java. The JBoss/Server and complement of products are delivered under a public license. With a huge amount of downloads per month, JBoss is the most downloaded J2EE based server in the industry.

## 4. Acknowledgements

We would like to thank Thomas Deichsel and Frank Henze from media-style.com for their wonderful interface design. We would also like to thank all the JBoss-IDE community for their support and their feedback.

---

# 1

## Introduction to JBossIDE

JBossIDE offers you:

- Extensive and intuitive support for XDoclet.
- The debugging and monitoring of JBoss servers and the controlling of their life cycles.
- An easy way to configure the packaging layout of archives (packed or exploded)
- A simple way to deploy the packaged and/or exploded archive to a JBoss server
- Several J2EE wizards to ease and simplify J2EE development.
- Source code editors for JSP, HTML, and XML

---

# 2

## Install & Upgrade

Eclipse offers an easy way to install/upgrade features. It is done by hand the first time and then, Eclipse can check whether updates are available, download them and install them.

This chapter describes how to install JBoss-IDE with the install/update features of Eclipse, and how to stay up-to-date automatically.

### 2.1. Eclipse 3.1.x

Follow these steps :

- Start Eclipse.
- Select `Help > Software Updates > Find and Install...`
- Select `Search for new features to install`, and press `Next >`
- Select `New Remote Site...` from the right menu. In the dialog fill the name with `JBoss Eclipse IDE` and the URL with `http://download.jboss.org/jbosside/updates/stable`
- Make sure `JBoss Eclipse IDE` has a check next to it, and press `Finish`.
- Expand the `JBoss Eclipse IDE` tree, and check the release named `JBossIDE 1.5`. Click `Next >`, and Eclipse will ask you if you agree to the licensing terms of JBoss Eclipse IDE. If you agree, select `I accept the terms in the license agreement`, and press `Next >`
- Eclipse will show you a list of features it is going to install. See Figure 1. Press `Finish` to start installation.
- After all the features have been downloaded, Eclipse will prompt if you want to install each feature. The quickest way to install everything is to press the `Install All` button.
- At the end of the installation, you will be prompted to restart Eclipse. Click `Yes`.

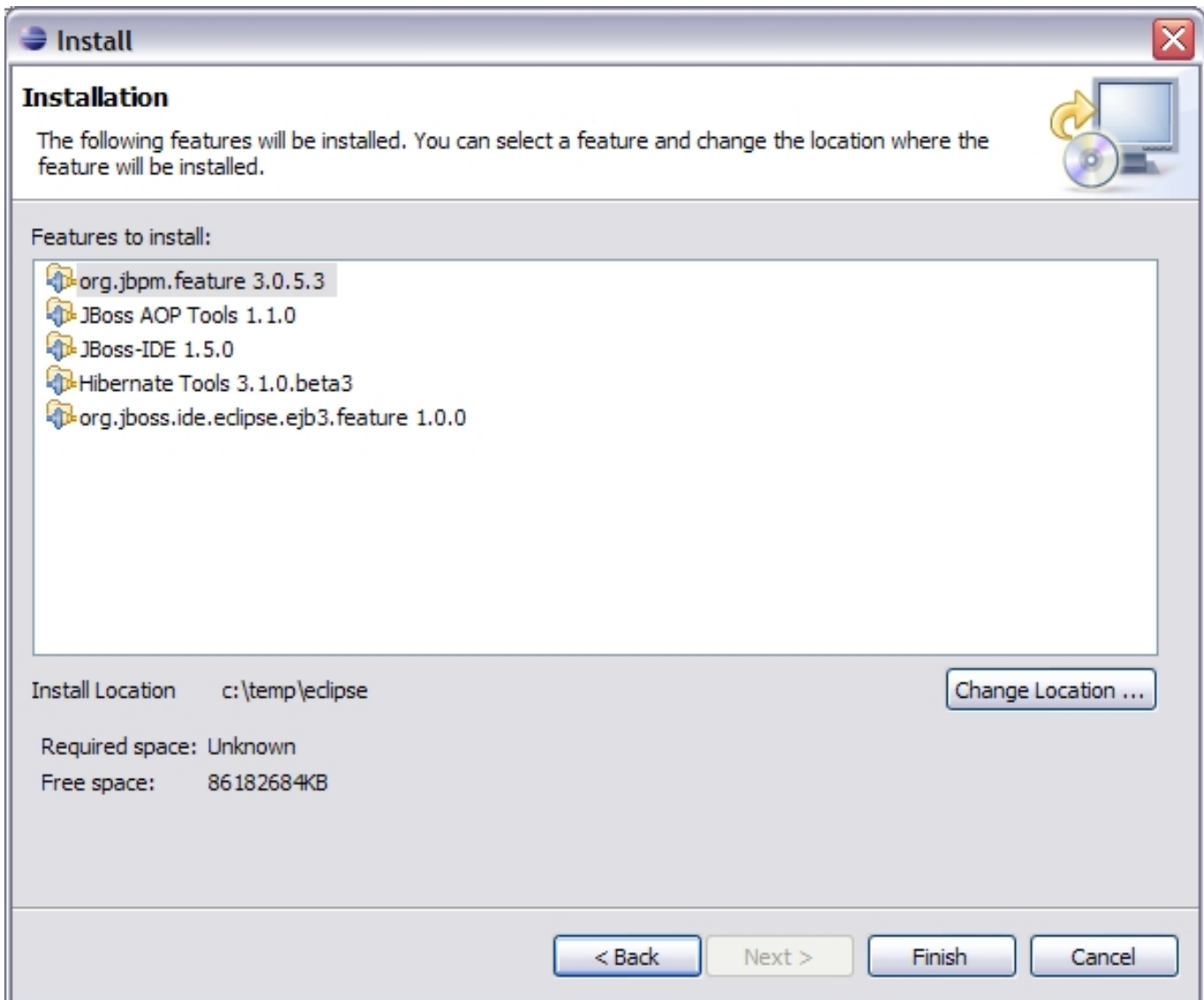
#### Tip

If you are behind a proxy you have to go to `Window > Preferences > Install/Update`, select `Enable HTTP Proxy Connection` and insert values for `Host Address` and `Port`.

#### Tip

You can be notified when new updates are available. You can also configure Eclipse to fetch new updates and make them ready to install. All this configuration can be done through the `Help > Software Updates > Configuration Manager` menu.

Have a look at the Eclipse documentation to get more information about the Configuration Manager.



**Figure 2.1. Features in JBoss Eclipse IDE 1.5.**

---

# 3

## XDoclet Upgrade

JBoss-IDE looks for the XDoclet modules in the following directory :  
\$ECLIPSE\_HOME/plugins/org.jboss.ide.eclipse.xdoclet.core\_x.y.z/ where x.y.z is the release of JBoss-IDE.

You can add or remove modules from this directory as you like. After such a change you have to refresh the XDoclet module list and data.

When the XDoclet code assist is used the first time after Eclipse has been restarted it looks for the cache and if the cache is there it just takes a couple of seconds to load the data. Go to `Window > Preferences > JBoss-IDE > XDoclet` for refreshing module list and to `Window > Preferences > JBoss-IDE > XDoclet > Assist` to force the data cache to be regenerated.

Note that it is necessary to refresh both the module list and to flush the cache, otherwise new modules will not be correctly taken into account.

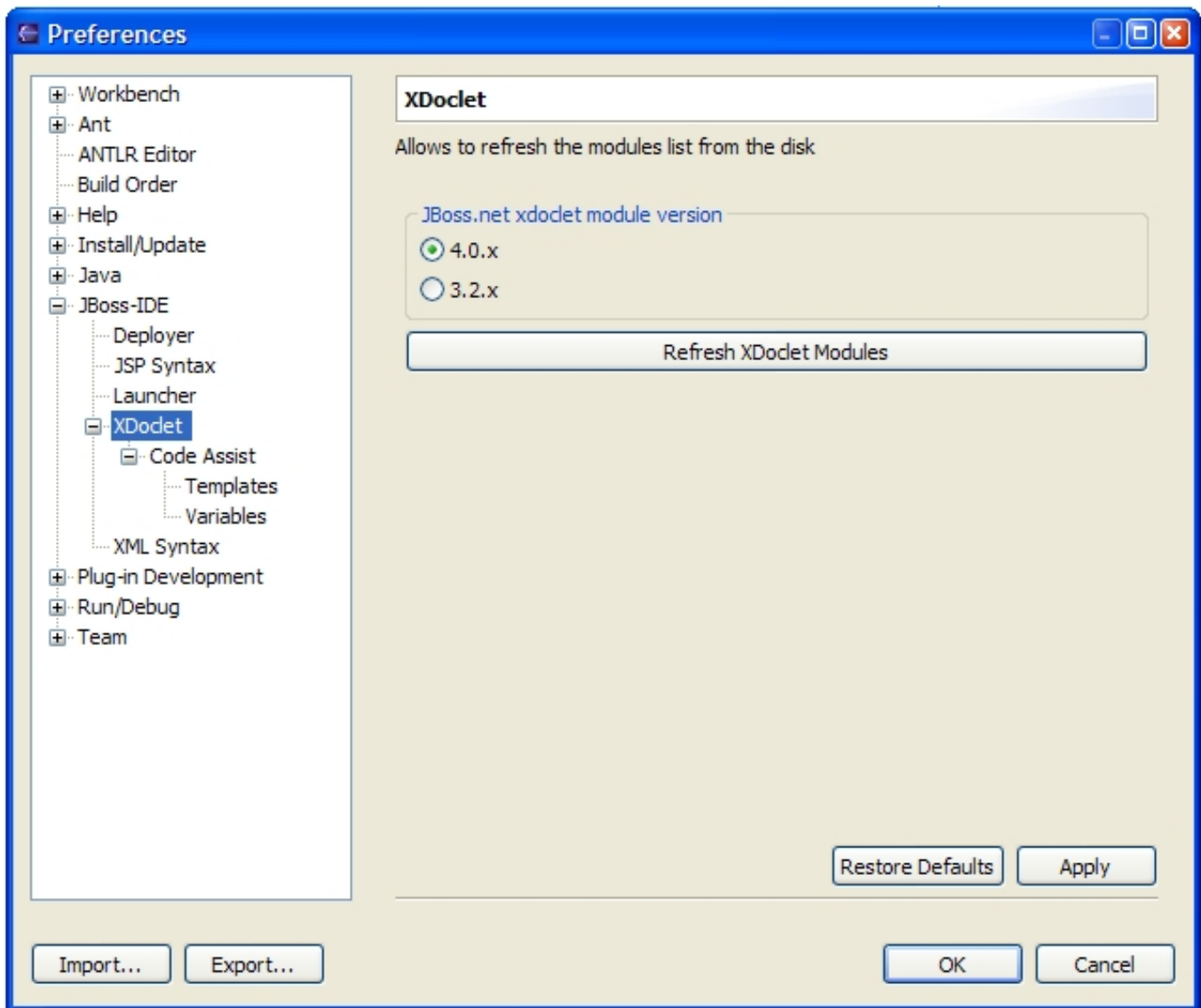


Figure 3.1. Preferences window for XDoclet modules list.